

STUDENT ACCESS & EQUITY

JULY-NOVEMBER HIGHLIGHTS

2020-2021

LEARNING PREFERENCES AND ATTENDANCE



82%
average daily attendance
17,773 Total Students (PreK-12)

COMMUNICATIONS



1,099
total communications

CLOSING THE DIGITAL DIVIDE



95% of students
have received their district device*

7,240
In-Person
Learners

42%



58%

9,975
Fully Online
Learners

Average Daily Attendance (ADA)



In-Person Learners

85%

Online Learners

80%



Special Education

In-person

78%

Online

74%

English Learners

In-person

81%

Online

74%

Resident Students

In-person

82%

Online

76%

Non-Resident Students

In-person

93%

Online

92%



211 HPS
Website Posts



19 HPS
Newsletters



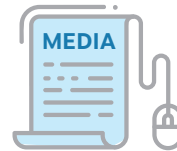
4 Superintendent
Video Updates



6
Superintendent
Livestream
Town Halls



594
Social Media
Posts



12 Press Conferences
16 Superintendent
Interviews
74 Media Coverage



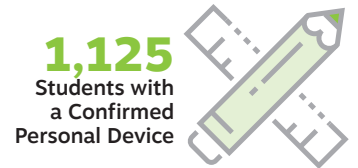
144
Emails and
Phone Calls to
All Families



19
Superintendent
Written Updates



16,551
Students with a
District Device



1,125
Students with
a Confirmed
Personal Device



2,000
District Devices
Currently Available
for Students



3,916
Tech Support
Requests Completed
(from students/families)

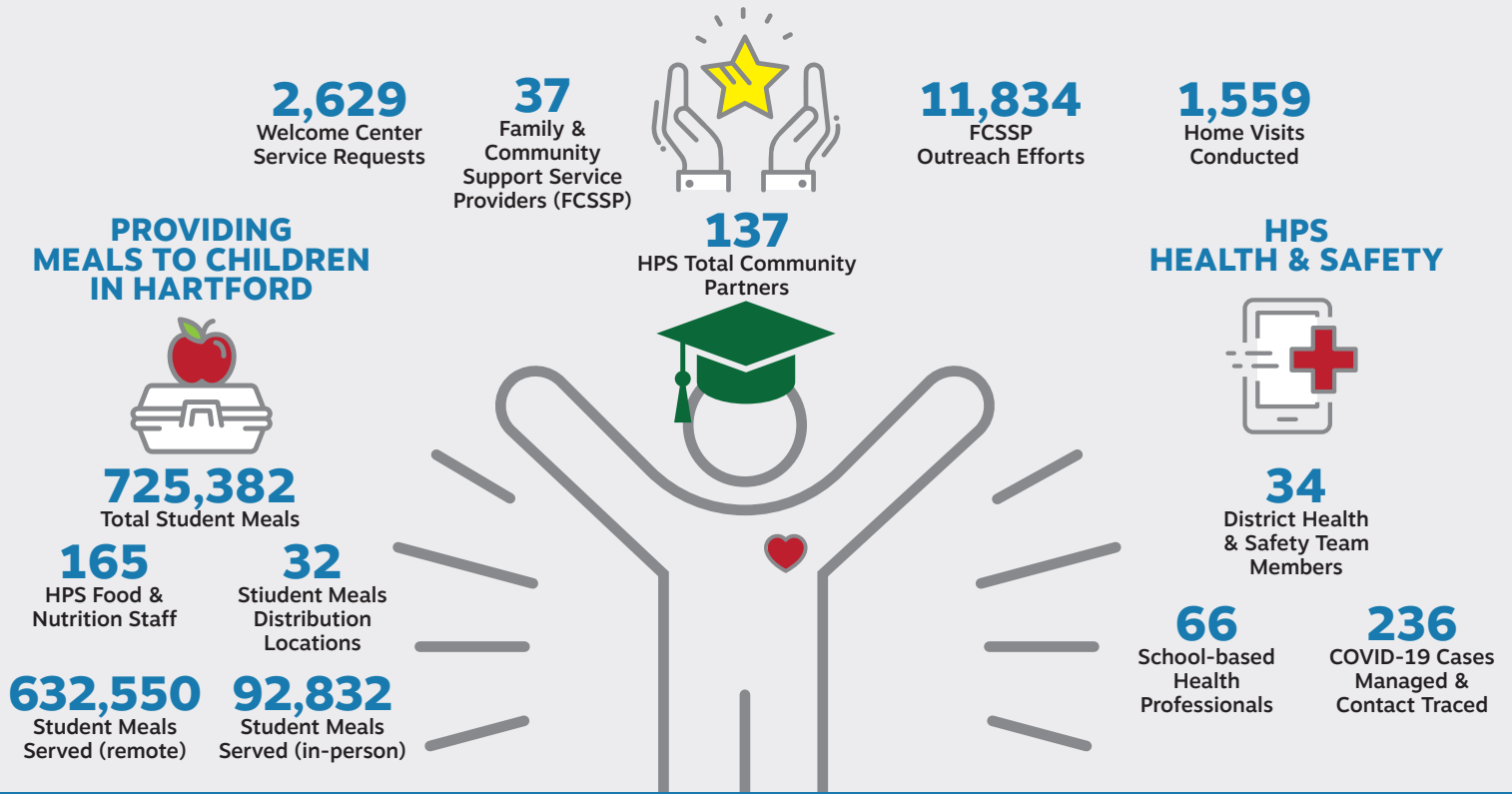
407
Devices
Refurbished



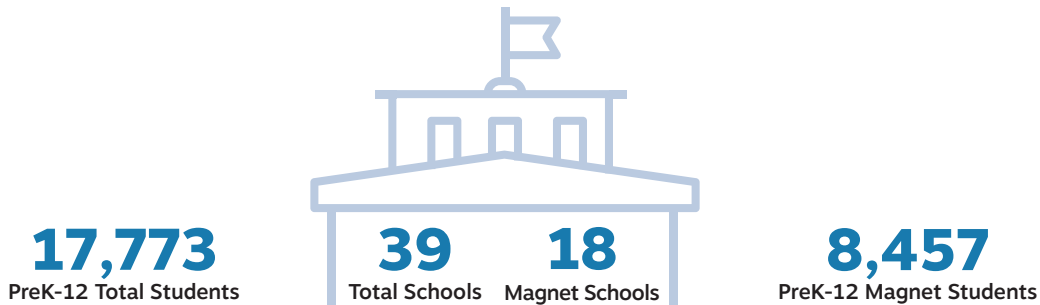
1,937
Designated
Hotspots
Available For
Student Use

*Devices are currently available for every student.

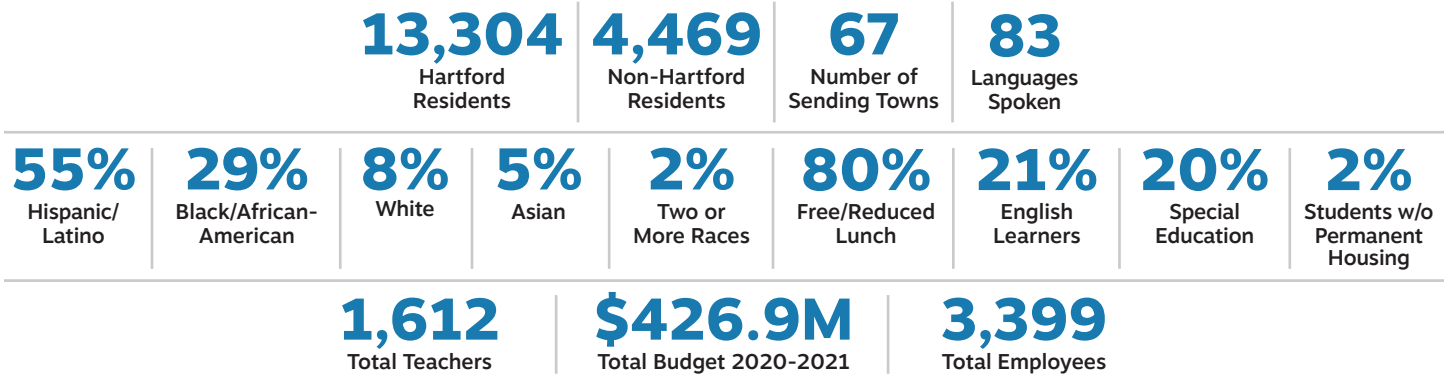
FAMILY AND COMMUNITY PARTNERSHIPS



SUPPORTING THE WHOLE STUDENT



WE BELIEVE IN OUR BEAUTIFUL AND CAPABLE STUDENTS



330 Wethersfield Ave., Hartford, CT 06114

www.hartfordschools.org